

madimack

inverFLOW^{PRO}

CUTTING-EDGE INNOVATION, PERFORMANCE AND EFFICIENCY



Powered by  **invermac**
TECHNOLOGY

Welcome to a new era of technology.

Madimack's range of products is designed to revolutionize the way you experience the world. With a steadfast focus on sustainability, innovation and enhanced user-features, we are proud to offer cutting-edge solutions that exceed your expectations.

At Madimack, we believe in a future where technology coexists harmoniously with the environment. That's why sustainability is at the core of everything we do. Our products are meticulously crafted to minimise their ecological footprint.

We are thrilled you chose Madimack to partner with. Together we will shape a more sustainable future.



Alex Welsh

Madimack Global CEO

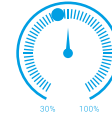


Madimack's enhanced inverter technology, InverMAC, is engineered to support inverter motor operation. The inclusion of product specific proprietary technology allows for precise control of motor speed and energy usage across our range. InverMAC technology supports Madimack's overall position of unrivalled innovation, sustainability and performance. By incorporating inverter motor technology in creative and unique ways, Madimack is leading the way in the development of energy-efficient products.

INVERMAC ENHANCED INVERTER TECHNOLOGY

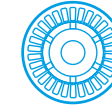
Madimack's advanced InverMAC technology optimises the efficiencies of your pool pump. It combines full inverter technology, volute hydraulic system and DC brushless motor with intelligent operation. Additional benefits include the reduction of operation noise by more than 30x. Providing an almost silent experience. In comparison to basic pool pumps, the InverFLOW Pro performs up to 90% better in energy efficiencies.





Full Inverter technology

Precise control of speed, including automatic adjustments for capacity between 30-100%



Centrifugal impeller technology

Advanced systems utilising the latest in centrifugal impeller technology



DC brushless motor

DC Brushless motor delivering an almost silent experience, optimised efficiencies and durability





OUTSTANDING ENERGY EFFICIENCY DELIVERING LONG-TERM BENEFITS



InverFLOW PRO



Single speed pump



Money Saved

Approximate Retail Price

Energy Cost

Total Cost Year 1

Energy Cost

Total Cost Year 2

Energy Cost

Total Cost Year 3

Energy Cost

Total Cost Year 4

Energy Cost

Total Cost Year 5

\$1450

\$238

\$1688

\$238

\$1926

\$238

\$2164

\$238

\$2402

\$238

\$2640

\$700

\$937

\$1637

\$937

\$2574

\$937

\$3511

\$937

\$4448

\$937

\$5385

-\$51

\$648

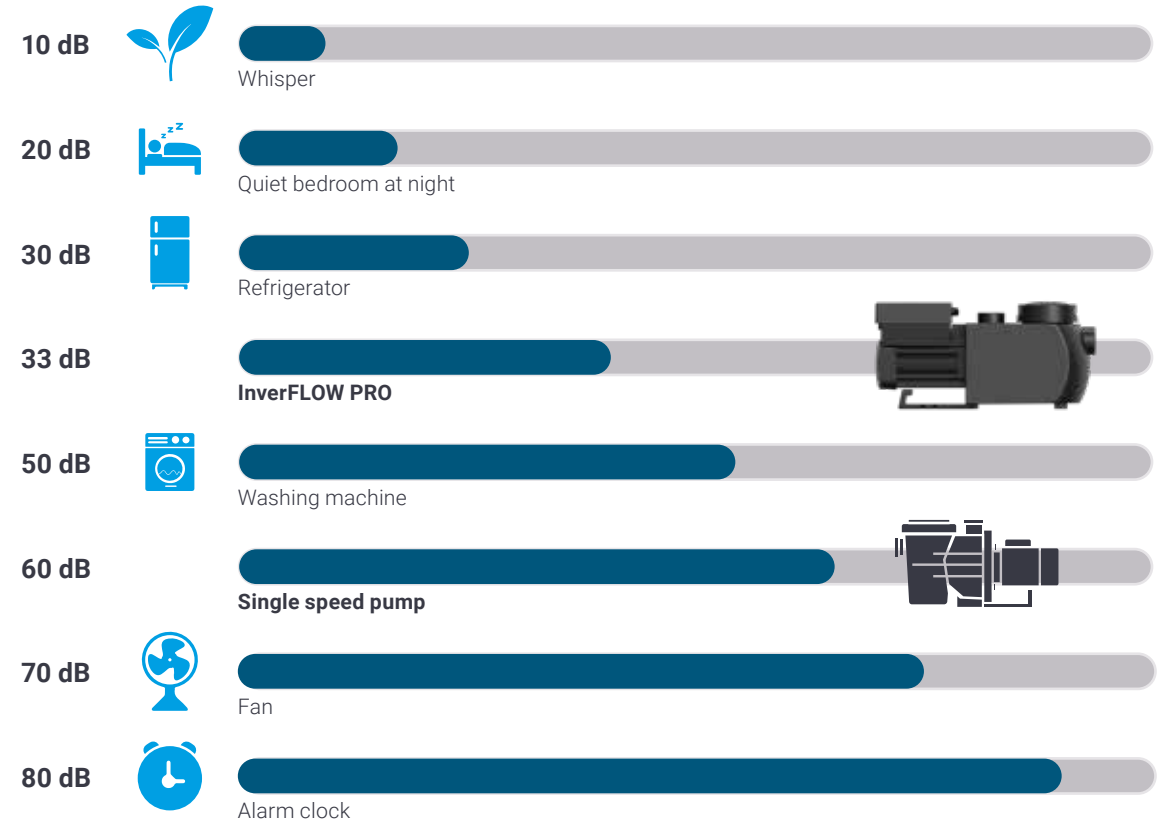
\$1347

\$2046

\$2745

Disclaimer: Product price is indicative RRP only. Energy costs are based on a 50,000L pool running 8 hours per day with electricity pricing of 30c per kW.

A VIRTUALLY SILENT EXPERIENCE





INTELLIGENT ADVANCED INTERFACE



**AI/MI mode
optional**



Flow reading



**Power consumption
reading**

Advanced Features & Benefits



Active Energy Monitor

Real time energy
monitor



Adaptive Flow Technology

Intuitively adjusted flow rates to
match capacity needs, providing
significant energy savings and
reduced wear and tear.



MEPS

Delivering market-leading
energy efficiency



No-Flow Protection

Intuitive product
protection



WIFI

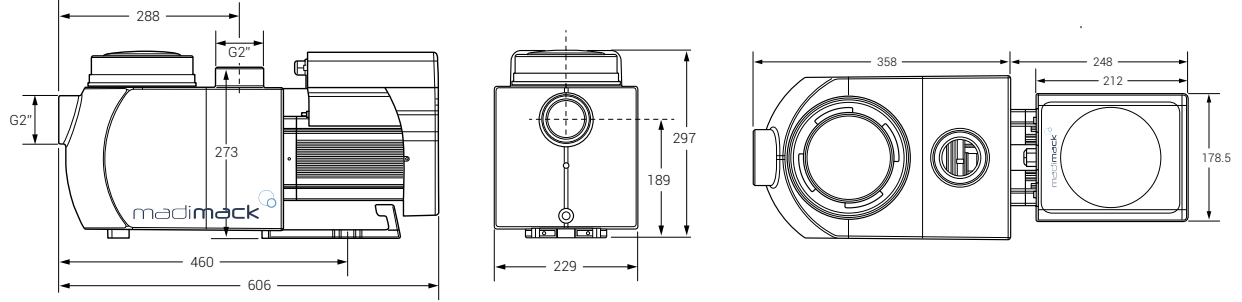
Can be controlled at
anytime, anywhere.

TECHNICAL PARAMETERS

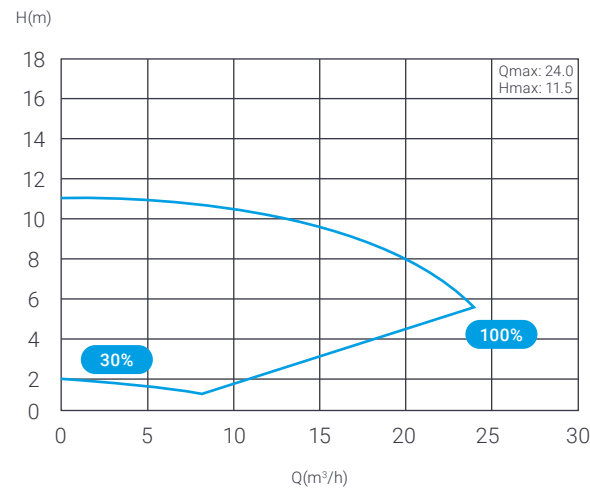
	Advised pool volume (m³)	P1 (kW/HP)	Voltage (V/Hz)	Qmax (L/m)	Hmax (m)	Circulation	
						Flow at 8mh L/min	Flow at 10mh L/min
P300i	30~50	0.76/1HP	220~240/ 50/60	400	12	300	210
P400i	40~70	1.03/1.5HP		450	14.6	400	340
P500i	50~80	1.34/2HP		500	17.4	500	440

Dimensions

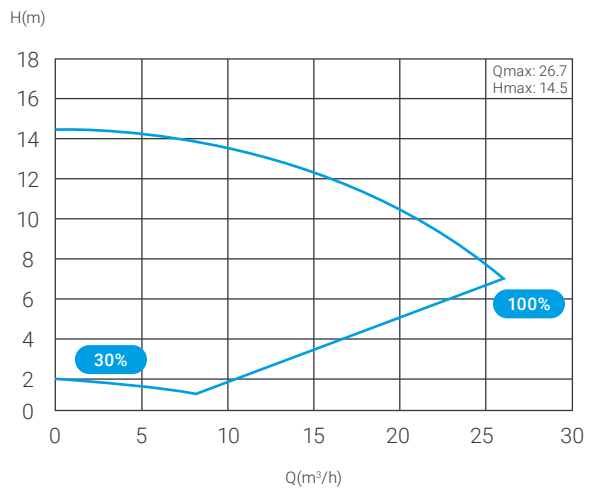
Model	Packing Dimension (mm)	Weight (kg) Gross/Net
InverFLOW Pro 300/ InverFLOW Pro 400/ InverFLOW Pro 500	648*270*340	19.5 / 16.5



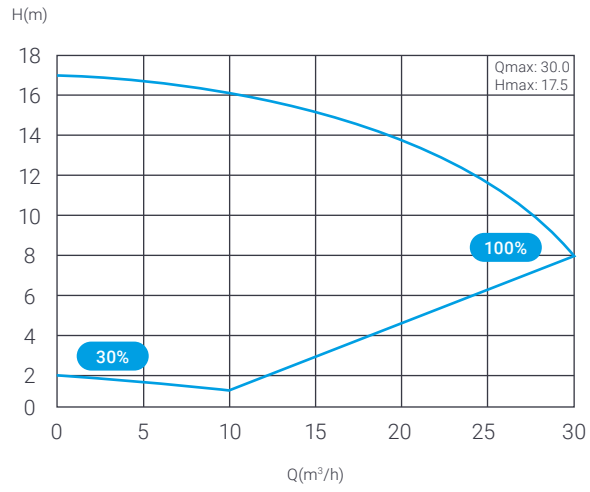
Performance Curve



InverFLOW Pro 300



InverFLOW Pro 400



InverFLOW Pro 500

madimack

